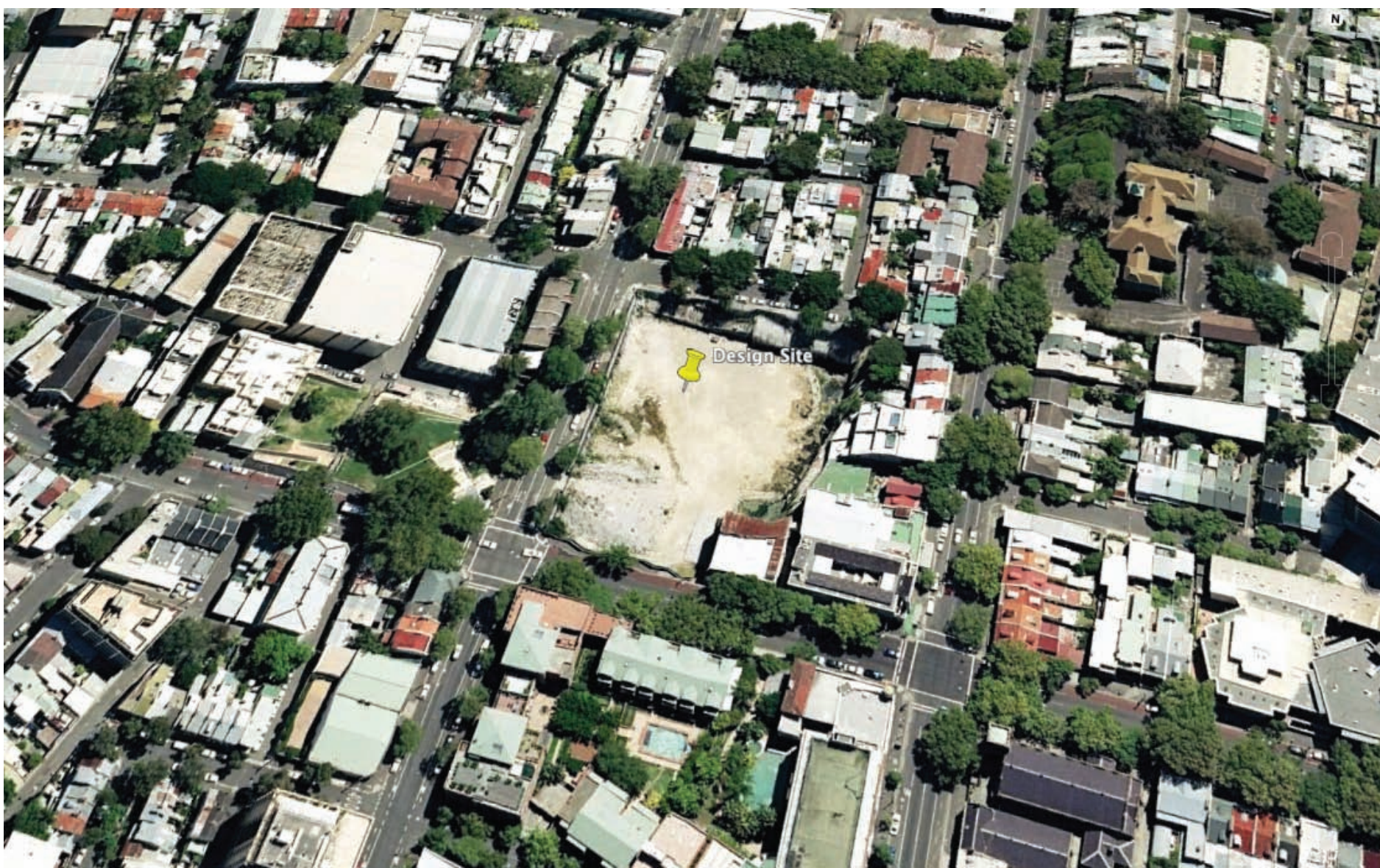


Existing Site



Existing surry Hills

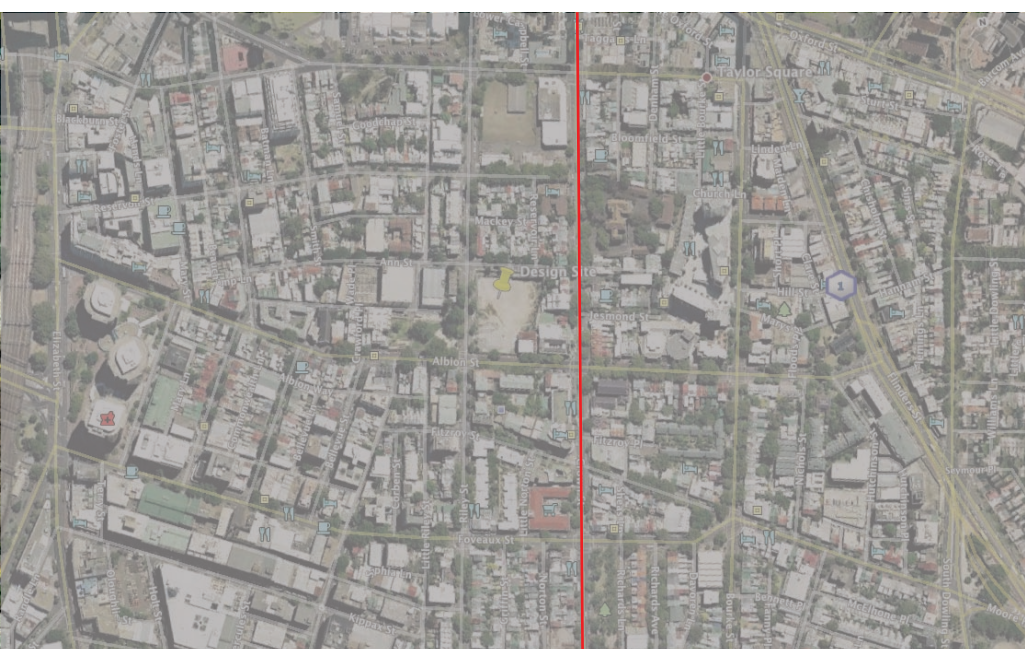
The site for this design project is located on the Surry Hill suburb. Surry hills is located on the south east of the Sydney central business district and surrounded by several suburbs, such as Darling Hurst, Chippendale, Haymarket, Moorepark, Paddington, Redfern. Surry hills have mix residential, commercial and light industrial areas. The heart of surry hills community is on the Crown Street, featuring a mix of cafes, restaurants, fashion and home wares stores. Surry Hills is within easy walking distance to the Sydney CBD, and is included in a widening network of cycle ways. Surry hills also near to the largest station on the CityRail network, Central station



The distance between the site and the sydney train central station less than a kilo (700 m)

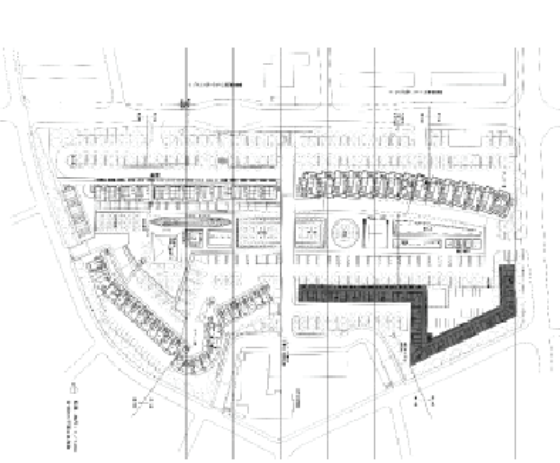
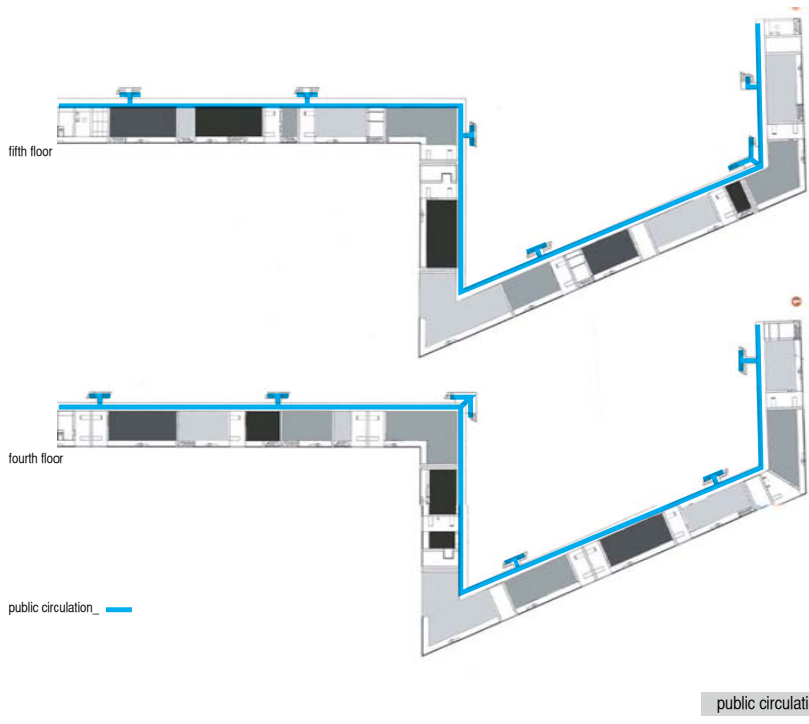
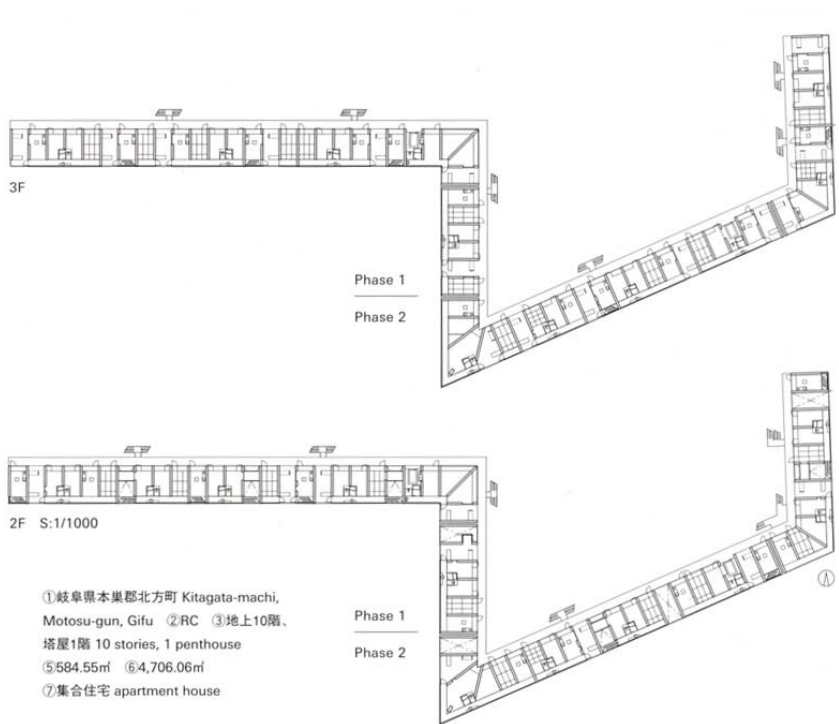


Green Space area Mapping around the Site



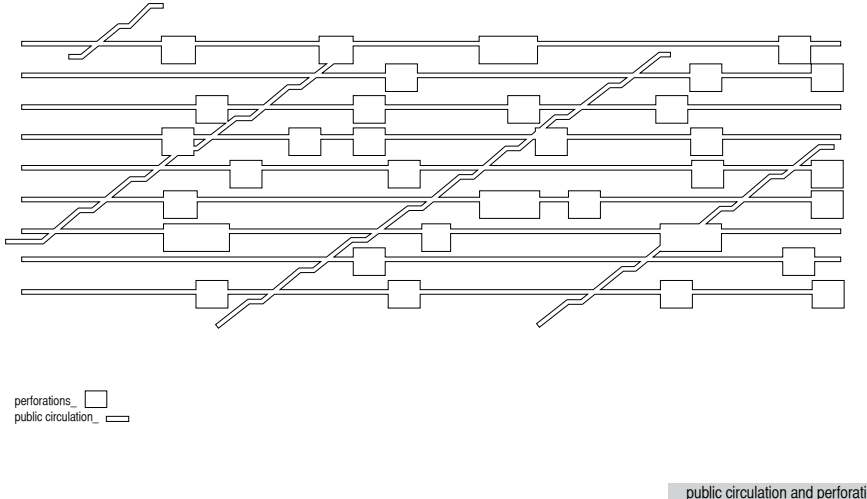
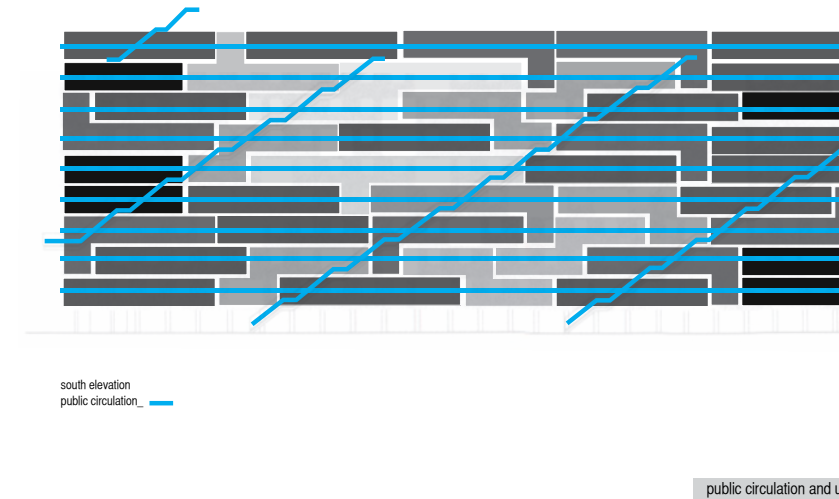
The heart of Surry Hill, Crown Street, which featuring mix of cafes, restaurants, fashion and home wares stores.

Research on Minimized Space



Gifu Kitagata - Sejima Wing, JAPAN

The building was designed by Sanna. Kazuyo Sejima. At the design level, the basic principle of minimizing construction waste is accomplished through careful manipulation of internal spatial configurations. Unit forms of co-habitation are designed by considering different types of groupings of people. All rooms are equally lined up along the side receiving the most sun and are linked on the front by a narrow sunroom. Each apartment has a semi-private terrace that can be easily access from the main public corridor. The corridor is used both as the excess way to the apartments and as an open public balcony.

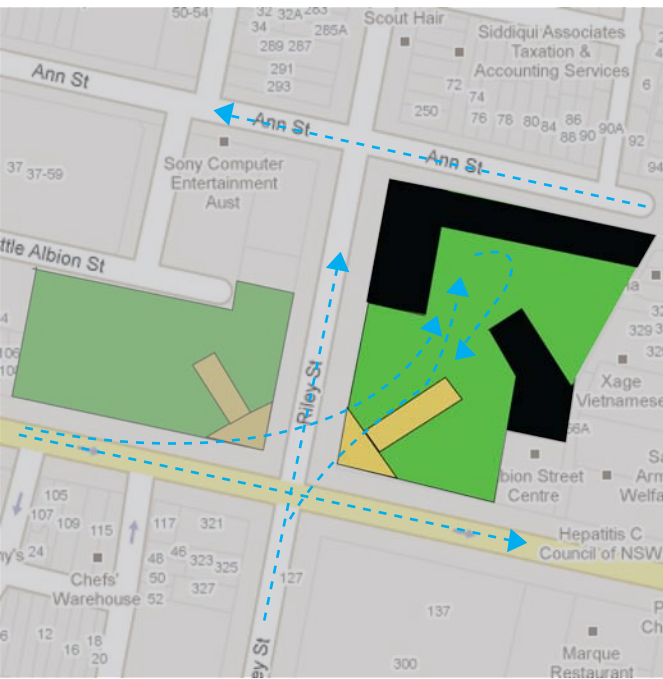


Micro flat

The Micro flat is designed by Piercy Conner to fulfil the entire normal criteria of a conventional flat while minimising the use of space. The unit area is around two thirds of the size of a conventional one bedroom flat in the city. The dimension of the unit is around 4 meter by 10 meter. The compact dwelling promotes a more functional space and together with the pre-fabricated components offers a way to save on the construction costs. The microflats propose an affordable answer for people who have desire to live the city lifestyle, and are willing to trade a bit of space for a reduced cost, without losing any of the conveniences of a conventional flat.

Site Development

- Legend
- Buildings
 - Green Spaces (Park)
 - Pathways
 - Vehicle Access
 - Wind Direction



The concept of the project master plan begins with emphasizing the green spaces to promote a better living environment. By continue the existing public garden, the idea of symmetry occurred through mirroring the pedestrian pathways. As such, a large public garden is generated towards the site and generates possibilities for the building areas. Considerations to create good building density require an adequate garden between each building. This will create a better air circulation and enable better view for every unit.



In order to promote a better air circulation, an opening should be created by dividing one massive building massing into two different buildings massing.



Pathways for buildings entrance are generated through following the existing public pathways in parallel as well as considering the closest distance within each building. The accesses for cars in and out are designed from the Riley Street, which allow cars to pass through underneath the bridge of the pedestrian pathways.



Considering the amount of activities that the communities will have inside this site require a bigger space for the pathways area.